

Date of publish: 22-11-2019

# Wen Ken Achieves 99.5% Cost Accuracy with SYSPRO

Robust SYSPRO solution will match Wen Ken's growth across territories



Wen Ken 永健

Wen Ken Group

Established in: 1937

Company size: 1,000 staff

## Customer Profile

Founded in 1937, Wen Ken Group has more than 80 years' experience in the research, development, production and marketing of Traditional Chinese Medicine (TCM), natural medicine, pharmaceuticals and over-the-counter health products. The company employs more than 1,000 staff and operates 40,000m2 of factories and offices in Southeast Asia. Wen Ken's customer base encompasses TCM stores, major supermarkets, pharmacy chains and convenience store chains from South East Asia to the Middle East.

## Their Business Challenge

To support business growth, Wen Ken needed to replace its existing disparate systems with a fully integrated, robust planning solution. Visibility into real-time stock information was lacking, and all the company's data was in separate systems.

## The Solution

Wen Ken selected Version 7 of the SYSPRO Enterprise Resource Planning (ERP) solution based on its well-established track record in the manufacturing and distribution sectors. The company has 31 SYSPRO users across five companies – two each in Singapore and West Malaysia, and one in East Malaysia.

## The Outcome

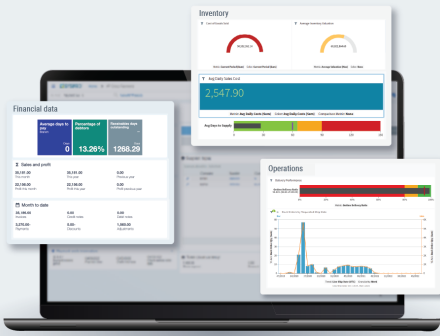
Since the implementation of SYSPRO 7, Wen Ken has improved the reliability, accuracy and timeliness of its data. This has in turn led to significantly enhanced decision-making.



"SYSPRO's well-planned roadmap ensures the product is futureproof, which allows the solution to grow in line with our expansion."

– **Fu Shou Jeen**, Executive Director, Wen Ken.

## SYSPRO 7 Benefits to Customer



- Inventory and costing accuracy improved from 92% to 99.5%
- Stockholding reduced by an average of 2 weeks for finished goods
- Packaging and raw materials reduced by 20%-30%
- Real-time, accurate data enhanced decision-making
- A robust ERP system that will match company growth across territories and manufacturing facilities

SYSPRO's channel partner Cosmo Synergy completed Wen Ken's SYSPRO 7 implementation in 6 months, focusing on the core functionality in the Financial and Distribution modules. The remaining modules were implemented in phases over the following 6 months.

In addition to improving its inventory and costing accuracy to 99.5%, Wen Ken reduced its stockholding by an average of 2 weeks for finished goods by using SYSPRO to integrate purchasing and production planning. The company has also achieved a 20% - 30% reduction in packaging and raw materials.

Wen Ken plans to implement SYSPRO's Mobile ERP solution for its mobile sales force and is also investigating the solution's Manufacturing Operations Management (MOM) capabilities to enhance visibility and control of its production systems.



## Implementation Partner

### Cosmo Synergy Sdn Bhd



Cosmo Synergy is SYSPRO's longest-standing partner in Malaysia, delivering enterprise solutions to manufacturers and distributors since 1994. Today, they leverage SYSPRO as an essential enabler and digital technologies to create a digital ecosystem for their customers, shaping a more resilient enterprise.

## About SYSPRO

SYSPRO is a leading, global Enterprise Resource Planning (ERP) software provider, specializing in key manufacturing and distribution industries. Our Industry-built solutions and services are designed to make things possible.

SYSPRO's ERP solution empowers customers to take the next step – whether it is expanding into new territories, adding new product lines, transforming business processes, or driving innovation. Through our ERP software, customers gain access to solutions, processes, and tools to assist in the management of data for key business insights and informed decision making. The solution is scalable and can be deployed in the cloud, on- premise, or both, and accessed via the web on any device to provide customers with choice and flexibility.

As a trusted advisor, SYSPRO remains focused on the success of partners and customers. With a strong commitment to channel partner growth, SYSPRO customers are backed by a team of global experts that drive maximum value out of IT systems and business solutions. We are committed to addressing the unique needs of our customers, enabling them to easily adapt and remain resilient. Our evolving solutions are aligned with industry trends and leverage emerging technologies that will enable partners and customers to secure a digital future and to gain a competitive advantage.

Learn more about SYSPRO's ERP solutions at [www.syspro.com](http://www.syspro.com) or contact us on [info@syspro.com](mailto:info@syspro.com)